

Greater Little Mountain Area of Wyoming

Help us protect this recreational paradise.



“Oil and gas revenues drive our local economy and we can balance that with protecting Little Mountain, which is the crown jewel of Sweetwater County. The thing that we have in this county, that is nowhere else, is intact wide-open spaces. I support protecting those places.”
— Sweetwater County Commissioner Wally Johnson

Rock Springs Bureau of Land Management (BLM) is updating their Resource Management Plan. The Greater Little Mountain Coalition (GLMC) is proposing new management prescriptions for this special place. Please read on to see why you may want to get involved.



For generations, the Greater Little Mountain Area (GLMA) of Wyoming has served as a hunting, fishing and recreational paradise for sportsmen and sportswomen. While relatively unknown to many, this area is truly one of the West's hidden gems. In addition to helping create outdoor experiences and memories with family and friends, the GLMA is also a place that feeds local economies and provides employment opportunities for residents of Sweetwater County.

QUALITY HABITAT

The region possesses large intact tracts of prime fish and wildlife habitat, translating into tremendous opportunities for hunters and anglers. Since these opportunities are irreplaceable, the Greater Little Mountain Coalition was formed in 2008 to ensure that this unique landscape is protected for generations to come.



ENERGY AND RECREATION

Greater Little Mountain Coalition members advocate for a management approach maintaining the current open landscape model for recreation and support conservation efforts for the long-term health of the area. The coalition recognizes certain areas are open for development by the energy sector – more than 50 percent of the area is currently leased by oil and gas.

CONTRIBUTING TO THE LOCAL ECONOMY

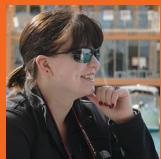
Visitors and residents alike cherish the recreational opportunities provided by this unique landscape, which supports up to 225 jobs in Sweetwater County. Revenue generated by hunting, fishing and other outdoor activities in the GLMA and the BLM Rock Springs Field Office contribute \$19.1 million dollars per year to the local economy.



For additional information visit:
greaterlittlemountain.org



Find us on Facebook
[facebook/GreaterLittleMountainCoalition](https://facebook.com/GreaterLittleMountainCoalition)



"Little Mountain is a one-of-a-kind place. The experiences that I've had there have made me realize that this place has to be preserved for future generations, so that others may be affected by its wildness and beauty as I have."

— Sweetwater County resident and University of Wyoming student Haley Powell

PARTNERS:

Bowhunters of Wyoming, Muley Fanatic Foundation, Steelworkers Union 13214, Southwest Labor Council, Theodore Roosevelt Conservation Partnership, Trout Unlimited and Wyoming Wildlife Federation

BY THE NUMBERS

- In the GLMA, populations of Colorado River Cutthroat trout (CRCT) exist in small, often isolated sagebrush ecosystems. Trout Creek, Gooseberry Creek, Sage Creek and Currant Creek are important waters, among others, for CRCT populations. Currant Creek and Sage Creek remain a stronghold for these native cutthroat as these populations are located in one of the driest regions of their historic range and represent the most southern expanse of CRCT in high desert elevations.



- Big game hunters spent \$3.7 million to pursue mule deer, \$4.1 million for pronghorn, \$4.8 million for elk and \$19,600 for moose in the GLMA in the last five years.

- On average, big game hunter success rates for this area remain well above 70%.

- Over \$3 million has been spent on fish and wildlife enhancement projects in the GLMA since 1990.

- Anglers spent an estimated \$9.7 million annually in Sweetwater County—based on a five year total of \$48.4 million.

- From 2010-2015 more than 31,600 resident and nonresident fishing licenses were sold in Sweetwater County.



Area location

