

BOARD OF COUNTY COMMISSIONERS



- REID O. WEST, CHAIRMAN
- WALLY J. JOHNSON, COMMISSIONER
- JOHN K. KOLB, COMMISSIONER
- DON VAN MATRE, COMMISSIONER
- RANDAL M. WENDLING, COMMISSIONER

80 WEST FLAMING GORGE WAY, SUITE 109
GREEN RIVER, WY 82935

PH: (307-872-3890) FAX: (307-872-3992)

Tuesday, March 20, 2018

Governor Matthew H. Mead
State Capitol, 200 West 24th Street
Cheyenne, WY 82002-0010

RE: Sweetwater County request for your support for deferring the BLM 4th Quarter Oil and Gas Proposed Leases within the Greater Little Mountain Area and the Hoback to Red Desert Migration Corridor.

Dear Governor Mead:

As you are aware, through our previous letters, the Sweetwater County Board of County Commissioners recognizes the great importance of oil and gas to the economy of our county and state and the need to balance energy development with the outstanding recreational opportunities provided by the Greater Little Mountain Area as well as the wildlife populations sustained by the Hoback to Red Desert Migration Corridor (migration corridor).

With this in mind, the Sweetwater County Board of County Commissioners requests your support for deferring the BLM 4th Quarter Oil and Gas Proposed Leases within the Greater Little Mountain Area and the migration corridor until the completion of the BLM Rock Springs Resource Management Plan (RMP) and its Record of Decision (ROD). See attached maps.

By deferring these lease sales until the completion of the RMP, Sweetwater County believes that, through the RMP process, all stakeholders would be given the opportunity to collaborate and make recommendations on strategies that will properly balance the economic and environmental concerns presented by the lease sales within the GLMA and the migration corridor.

Through our past letters, we have encouraged a collaborative process to determine the best management for these areas, and we are eager to continue our participation in such a process. However, if the GLMA and the migration corridor oil and gas leases are sold prior to completion of the RMP and its ROD, the opportunities for identifying and collaborating to balance the needs of energy development, wildlife preservation and recreation opportunities may be lost.

To prevent this from happening, please consider our request that your office support the deferral of the BLM 4th Quarter Oil and Gas Proposed Leases within the Greater Little Mountain Area and the migration corridor until the completion of the BLM Rock Springs Resource Management Plan (RMP) and its Record of Decision (ROD). We believe that this position is consistent with your statement from the second edition of Leading the Charge - Wyoming's Action Plan for Energy, Environment and Economy 2016: "We must work together, focusing on solutions and actions that advance Wyoming as a leader in energy and the environment."

BOARD OF COUNTY COMMISSIONERS

- REID O. WEST, CHAIRMAN
- WALLY J. JOHNSON, COMMISSIONER
- JOHN K. KOLB, COMMISSIONER
- DON VAN MATRE, COMMISSIONER
- RANDAL M. WENDLING, COMMISSIONER

80 WEST FLAMING GORGE WAY, SUITE 109
GREEN RIVER, WY 82935


PH: (307-872-3890) FAX: (307-872-3992)


If you have any questions regarding our recommendation, please do not hesitate to contact any one of the following members of the Sweetwater County Board of County Commissioners at 307-872-3897.

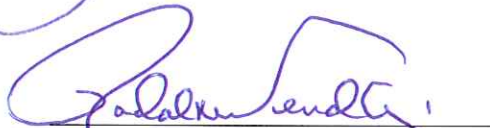
Sincerely,


Reid O. West, Chairman


Wally J. Johnson, Member


John Kolb, Member

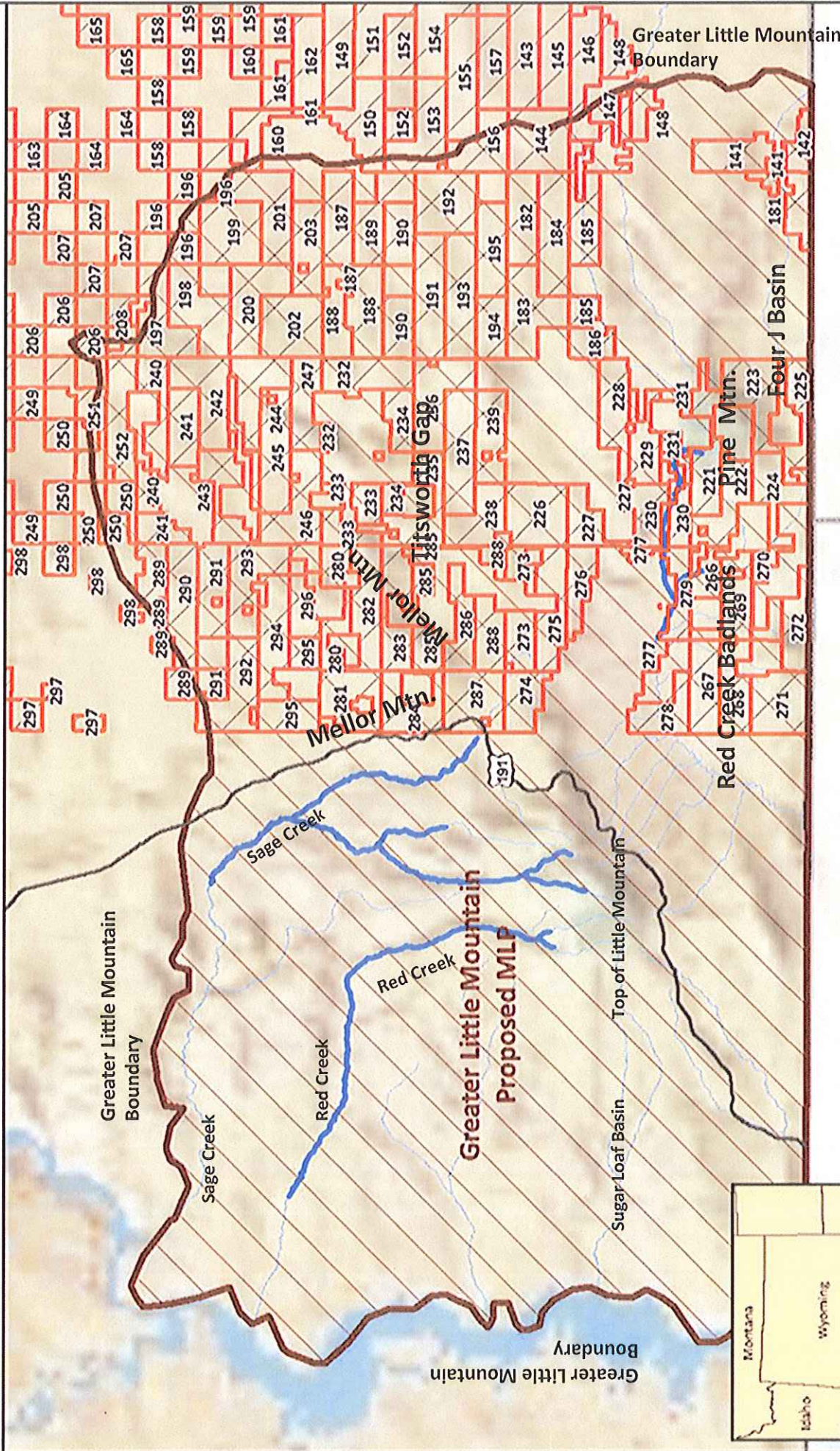

Don Van Matre, Member


Randal M. Wendling, Member

Enclosure: BLM 2018 Fourth Quarter Oil and Gas Lease Sales Greater Little Mountain Area Map
BLM 2018 Fourth Quarter Lease Sales Migration Corridor Map

cc: Senator Barrasso
Senator Enzi
Representative Cheney
Secretary Zinke
Mary Jo Rugwell, Director, BLM Wyoming State Office
Tim Wakefield, Manager, BLM High Desert District
Kent Connelly, President, Coalition of Local Governments
Greater Little Mountain Coalition

BLM 2018 Fourth Quarter Preliminary Oil and Gas Lease Sales Greater Little Mountain Area Map



Source: US National Park Service

Data Sources: BLM, eiri
 Map Prepared by: Alison Gallinsky
 Rocky Mountain Wild 3/16/2018 19-025 v2

0 2 4 6 8 10 Miles

ROCKY MOUNTAIN WILD

Legend

- City
- Interstate
- U.S. Highway
- Greater Little Mountain Proposed MLP
- County
- BLM Field Office
- Colorado River Cutthroat Trout Populations 2010
- Stream

BLM 2018 Fourth Quarter Preliminary Oil and Gas Lease Sales Migration Corridor Map

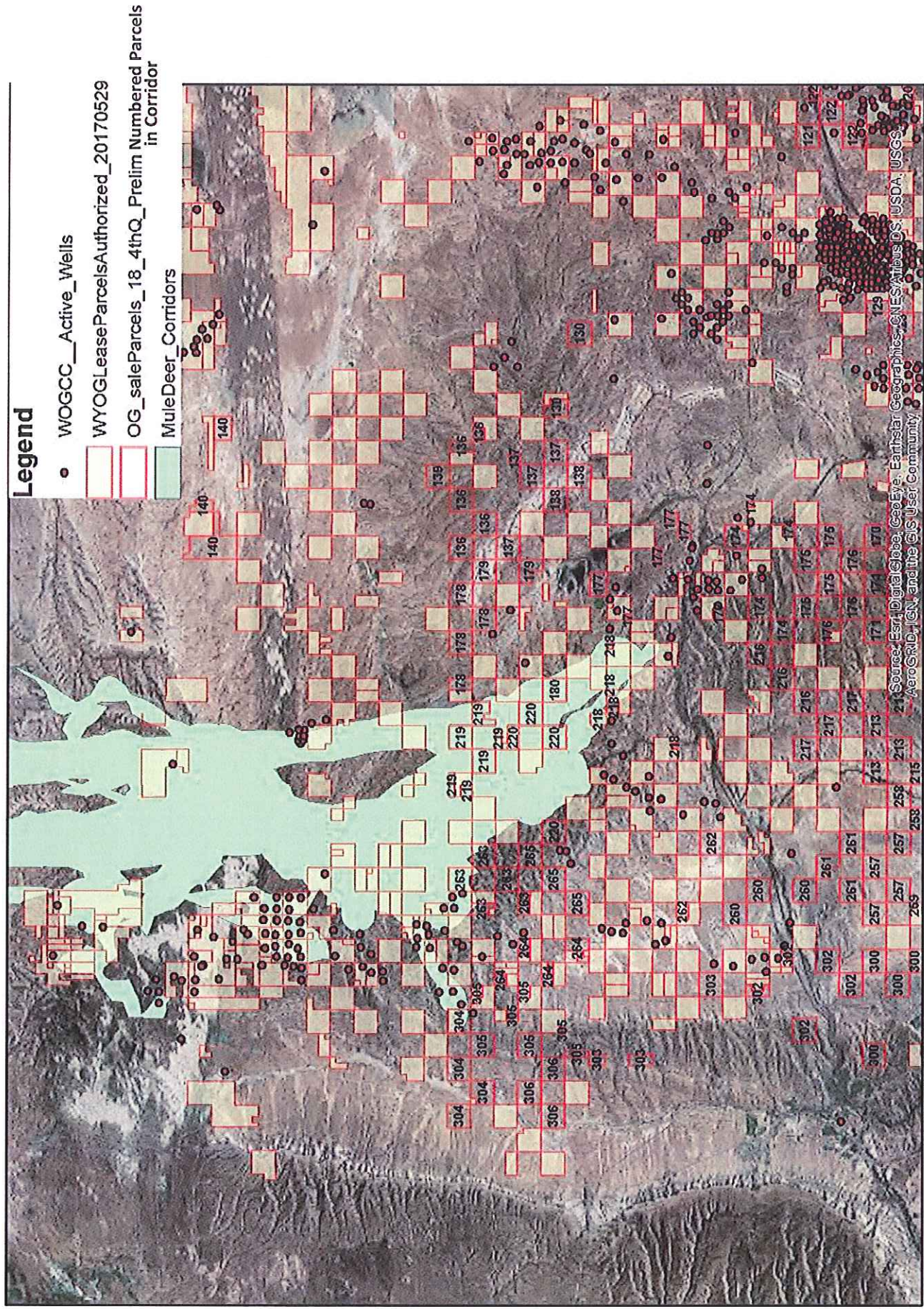


Figure 3. Red Desert to Hoback migration corridor proposed lease sale preliminary parcels.